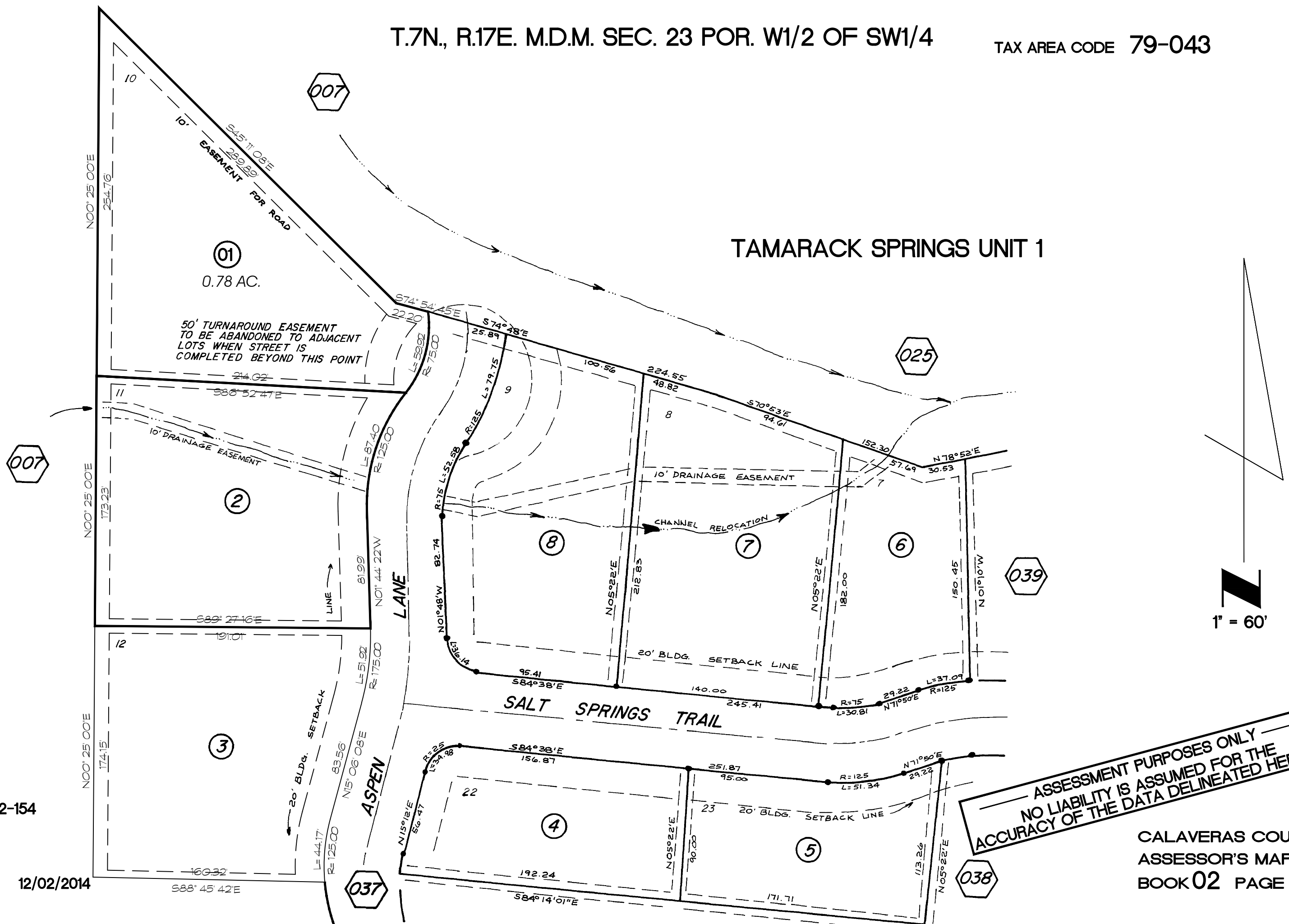


T.7N., R.17E. M.D.M. SEC. 23 POR. W1/2 OF SW1/4

TAX AREA CODE 79-043

TAMARACK SPRINGS UNIT 1



R.O.S. 22-154

REV. 4 12/02/2014

ASSESSMENT PURPOSES ONLY
 NO LIABILITY IS ASSUMED FOR THE
 ACCURACY OF THE DATA DELINEATED HEREON

CALAVERAS COUNTY
 ASSESSOR'S MAPS
 BOOK 02 PAGE 036