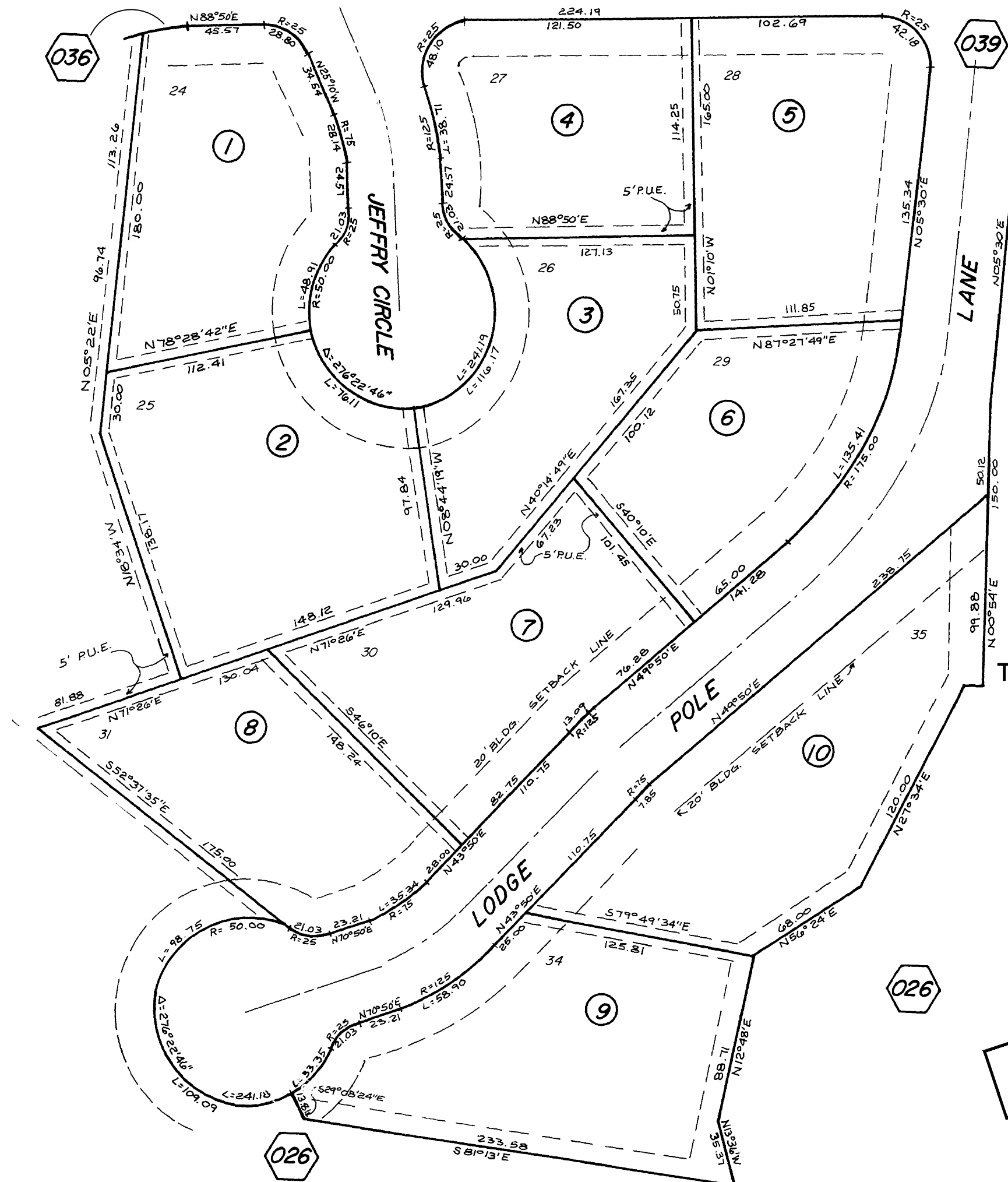
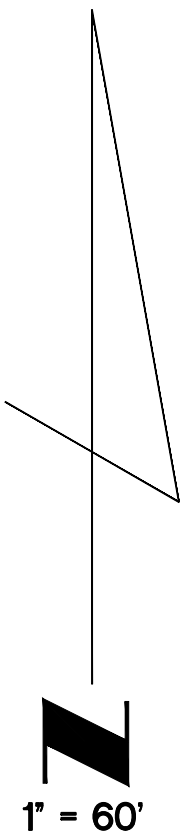


TAX AREA CODE 79-043

T.7N., R.17E. M.D.M. SEC. 23
POR. SW1/4 OF SW1/4



TAMARACK SPRINGS UNIT 1



ASSESSMENT PURPOSES ONLY
 NO LIABILITY IS ASSUMED FOR THE
 ACCURACY OF THE DATA DELINEATED HEREON

CALAVERAS COUNTY
 ASSESSOR'S MAPS
 BOOK 02 PAGE 038

P.M.

R.O.S.